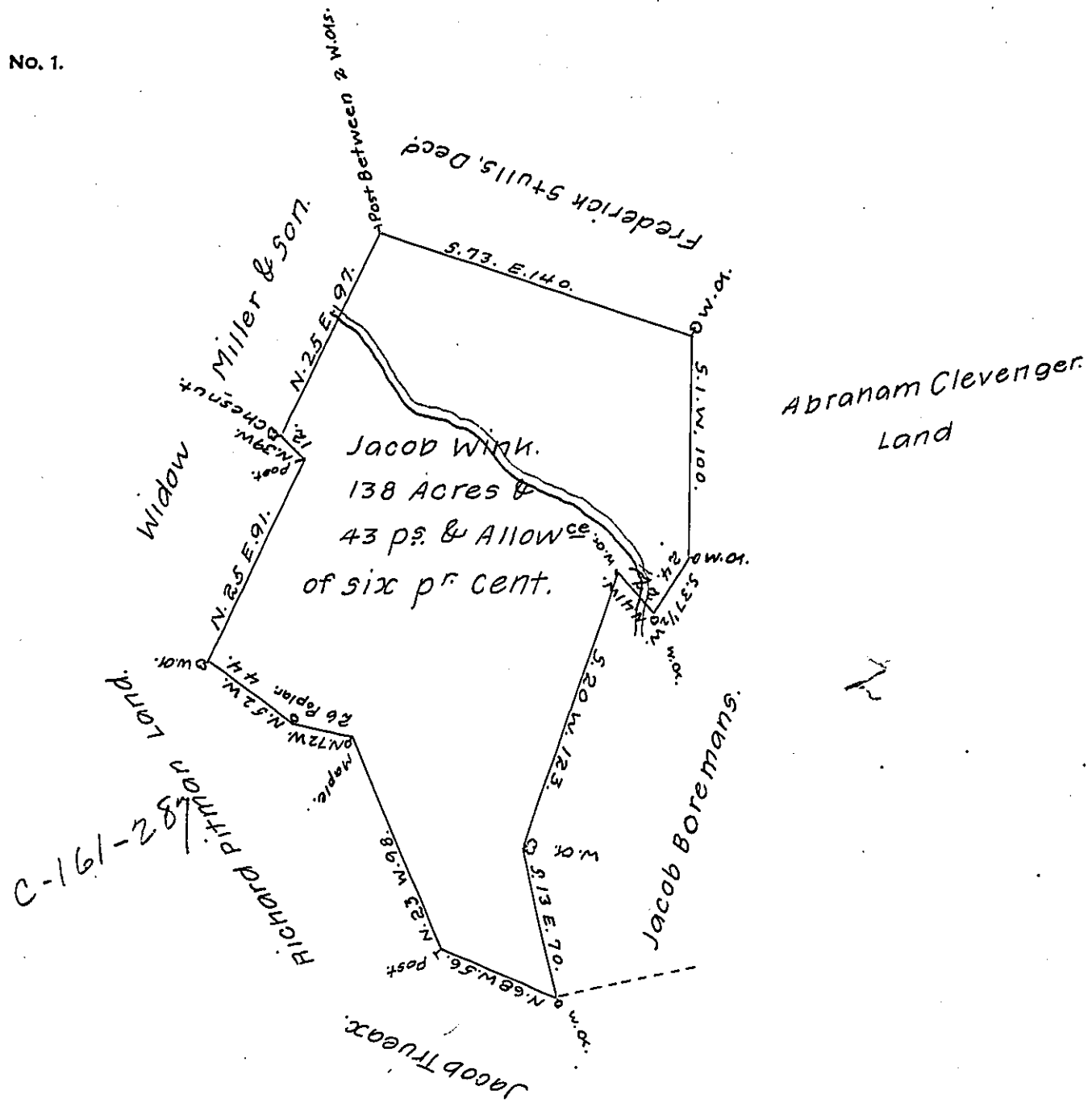


FORM No. 1.



A Draught of a Tract of Land situate in Bethel Township Bedford County Adjoining Lands of the Widow Mellott, Frederick Stals, Jacob Boremans & Richard Pitman Containing One hundred and thirty eight Acres & forty three Perches & the Usual Allowance of six per Cent for Roads surveyed the 7th day of January 1785 In pursuance of a Warrant bearing Date the 15th day of November 1784.

George Woods, D.S.

To John Lukens Esq, S.G.

IN TESTIMONY that the above is a copy of the original remaining on file in the Department of Internal Affairs of Pennsylvania, made conformably to an Act of Assembly approved the 16th day of February 1833, I have hereunto set my hand and caused the Seal of said Department to be affixed at Harrisburg, this seventh day of May 1907.

*Henry Howell*  
Secretary of Internal Affairs.